

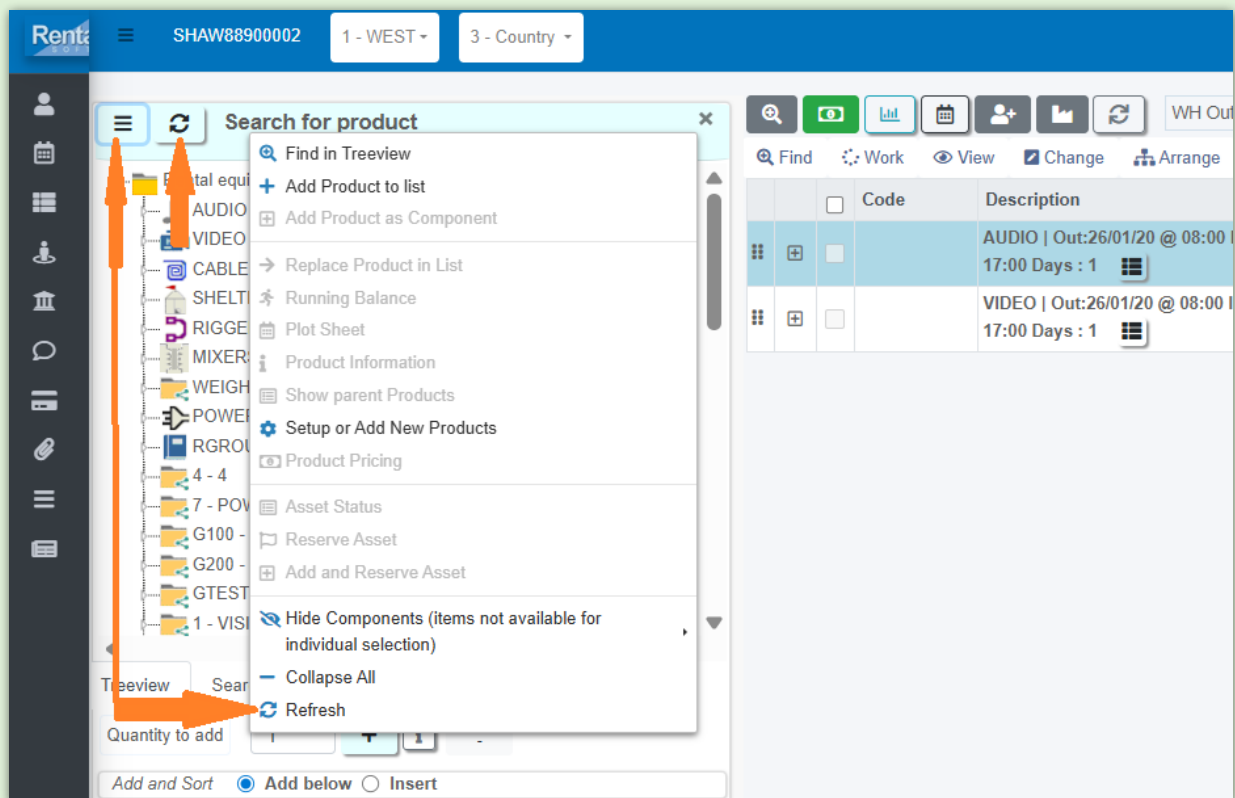
Find & Add Products to Equipment Grid

Last Modified on 21/01/2026 1:59 pm EST

Refresh the product tree whenever changes are made to inventory or equipment data, including but not limited to:

- Changes to equipment prices or other properties
- Adding, removing, or modifying components or accessories
- Moving products within the inventory structure
- Enabling, disabling, or reconfiguring inventory items

The equipment list is cached to improve performance, so changes will not be visible until the product tree is refreshed. Refreshing clears the product cache and ensures the latest inventory updates are displayed.



☒ Find & Add Products

☒ Add Product

☒ Edit any Line on Equipment Grid

☒

